



**Head Office**

9-13 Bronte Road, Bondi Junction, NSW, 2022  
E-mail: [hello@solarcarparks.com.au](mailto:hello@solarcarparks.com.au)

1300 545 229  
[www.solarcarparks.com.au](http://www.solarcarparks.com.au)

# The future of parking is here

...and it's solar powered





# Benefits of solar car parking

Solar car parking shades provide all these benefits and more:

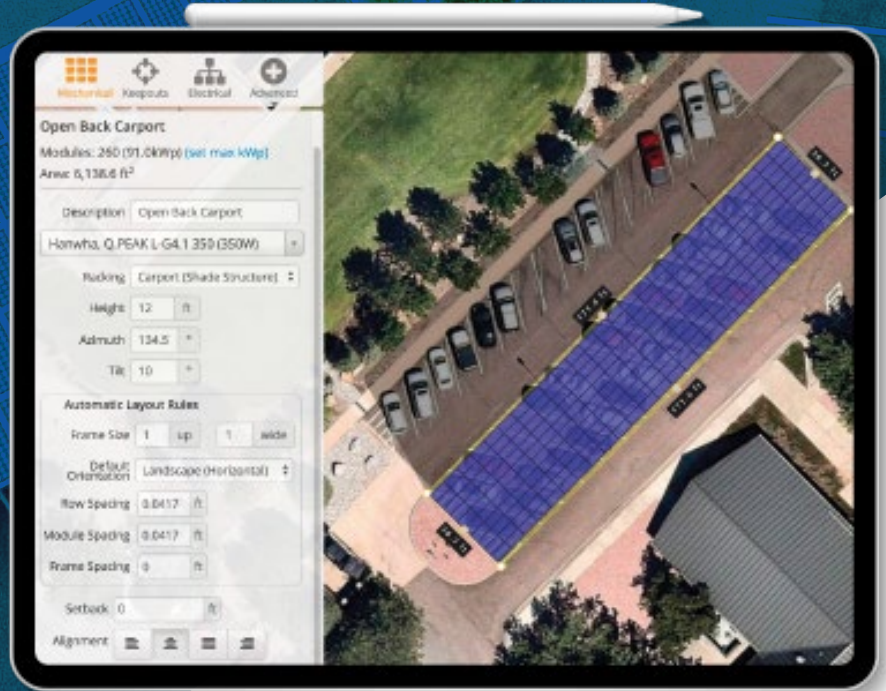
- ▶ Creating significant clean energy on-site
- ▶ Expand existing rooftop solar system
- ▶ Strong visual impact of company sustainability action
- ▶ A more comfortable parking experience for customers and employees
- ▶ Greatly reduced CO2 emissions increase NABERS rating
- ▶ Additional income stream for the property that can be capitalized
- ▶ Increased Asset value
- ▶ Significant clean energy production and reduced peak demand costs
- ▶ Future proof for customer Electric vehicle charging demand

## Key Facts:

- ▶ Solar footprint per car space approx: 3kW
- ▶ No loss of car parking spaces
- ▶ Annual solar generation per 100kW/30 spaces = 14MWh
- ▶ Typical ROI between 5 – 7 years including the structure
- ▶ 25 Year + Solar energy generation
- ▶ All solar panel types accepted
- ▶ Engineered for all wind regions
- ▶ Ground mount or multi story slab compatible



Our systems are  
"Panel Agnostic"  
designed for any  
solar module type



## System Design

Solar car parks provide an advanced solar system design service to ensure the optimum system performance.

### We understand:

- ▶ Site Orientation
- ▶ Optimum Cost Efficiency
- ▶ Energy Density
- ▶ Product Selection
- ▶ Installation Parameters



# What WE DO

---

SCP provide a tailored solar car park design and installation service. We are a dedicated team who understand the multifaceted DESIGN, PLANNING and INSTALLATION requirements involved with solar car park systems.

The implementation of solar car parks requires an in-depth knowledge across a broad spectrum of disciplines ranging:

- Design consultation
- Project management
- Civil engineering
- Construction and delivery

SCP simplify this complex process, by gathering the necessary information from the start. This enables us to tailor a design and pricing option that is clear and deliverable.

Our team have been part of the largest and most complex solar car shade installations in Australia. We understand the requirement for the best industry practices to ensure projects can be delivered on time and within the predetermined price.

## Consult

### FIXED PRICE OPTION

*We know what information to look for..*

We offer a unique approach which provides clarity and added peace of mind for all aspects of the design, supply and installation process. Because we do the correct preliminary surveys and data collection, we can then offer a fixed price model which negates any surprising costs mid install.

## We take care of it

- |                                 |   |
|---------------------------------|---|
| ✓ Manage the supply chain       | ✓ Site levels and markups                   |
| ✓ Manage all QA requirements    | ✓ As-built site information                 |
| ✓ Equipment supply              | ✓ Subterranean scanning and data collection |
| ✓ Geotechnical site information | ✓ Project planning                          |
| ✓ Building Surveys              | ✓ Project delivery                          |

# HELIO PARK Pro

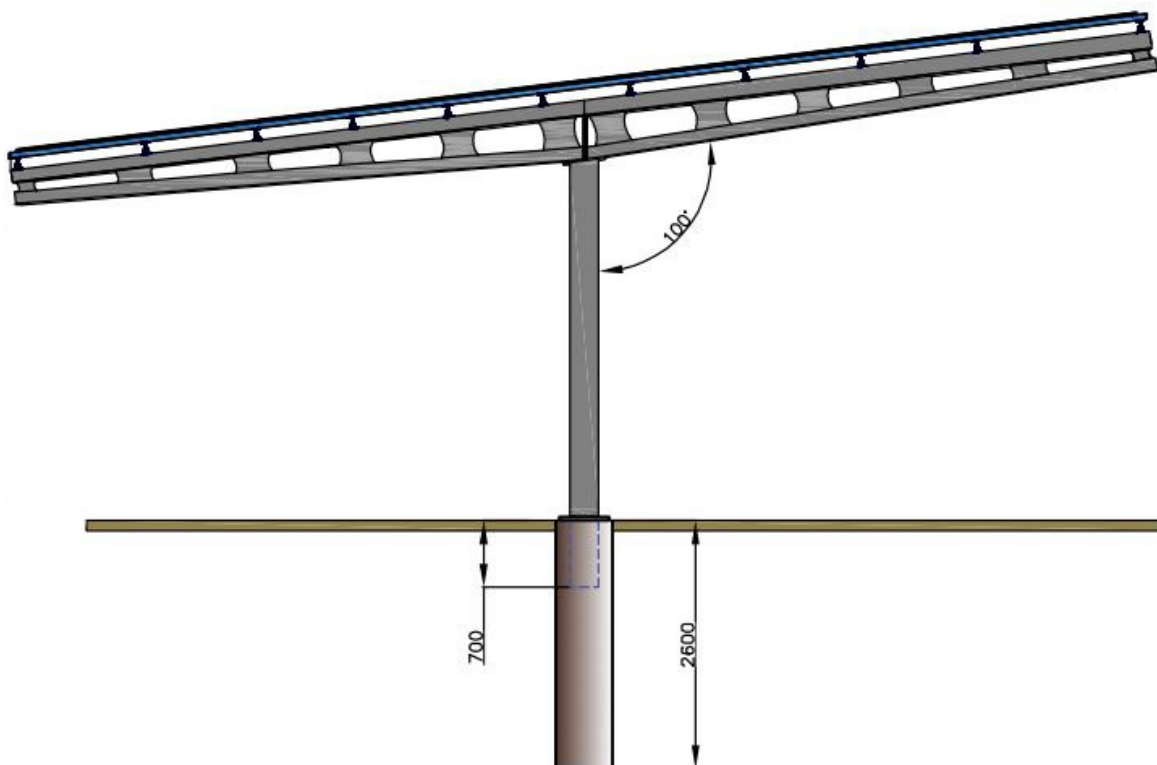
## Standard Arrays Single Parking 6-7m Double Parking 11-12m | Widespan to 28m

A versatile and cost-effective solar car park solution. Includes full D&C options for complex sites. HelioPark offers flexibility with a multiple of design configurations.

HelioPark systems possess a modern and pleasing aesthetic to transform your car park into a stylish solar powerhouse. We are also able to fabricate bespoke solar car park structures for any site design requirement.

Discreet footings that do not impede on car parking space to ensure the design meets Australian Standards for car park design.

- ✓ **Easy access for drivers**
- ✓ **Stylish**
- ✓ **Built to last**
- ✓ **Made in Australia**
- ✓ **Enhance the appeal of parking at your premises for clients and staff**



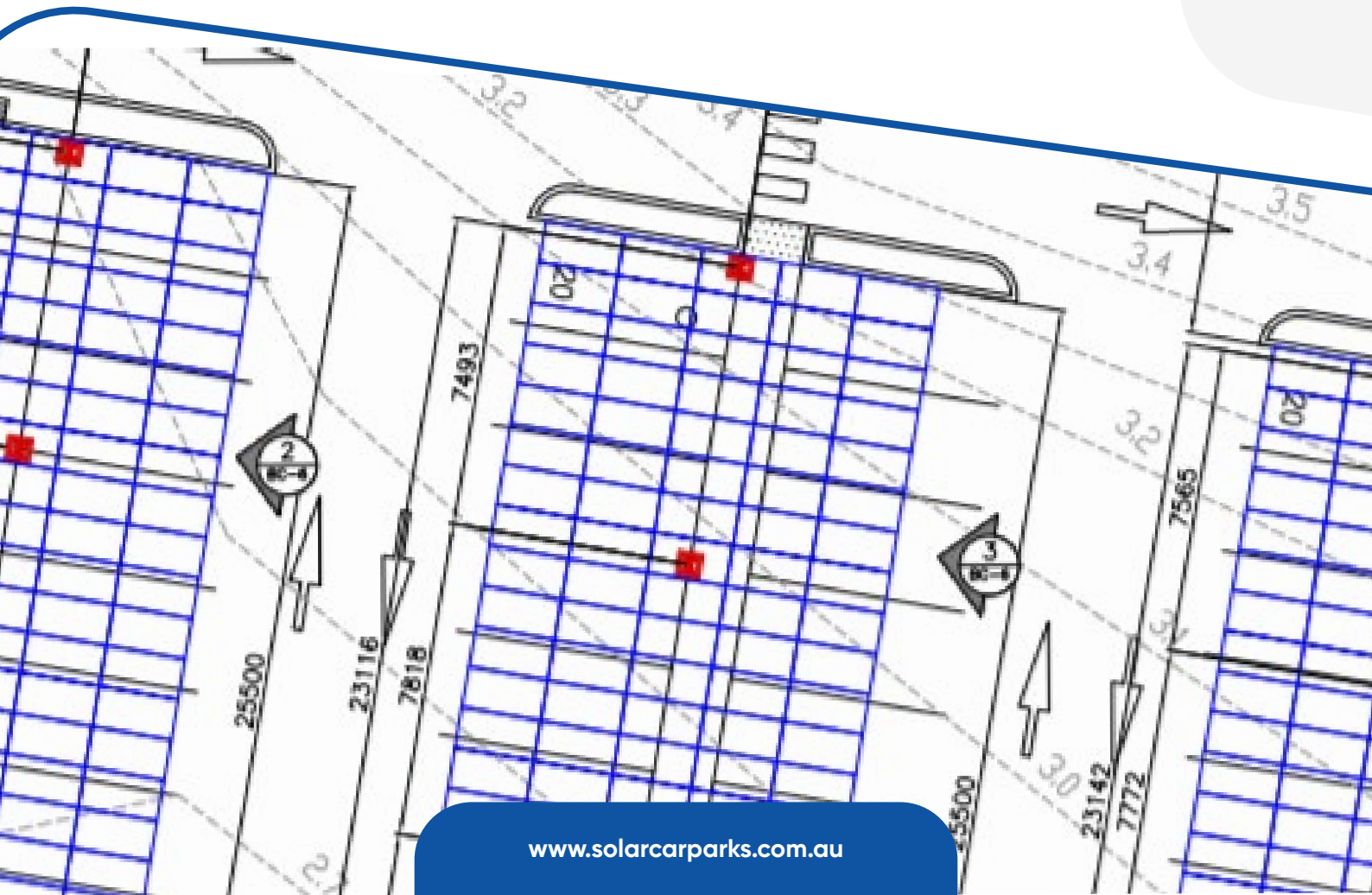
# Project Management

---

Transparency is our mantra. Keeping you informed during all stages of the installation process. We understand the workings of an active site, and we understand that communication is paramount to success.

We have the most experienced teams who understand both solar plants and car parks to ensure the project is implemented and delivered in the most professional manner possible. We have a policy of transparency and communications throughout all levels of the process from design, to delivery, to installation.

**Live car parks are our specialty.**





# EV CHARGING

Attract EV drivers by offering shaded charging points. Solar car parking systems solar energy to ensure you are driving on a 100% clean energy source.

## Installing an EV charger with solar car parking offers the following benefits:

- ▶ Help meet corporate sustainability goal
- ▶ Attract users to charge whilst visiting
- ▶ Fleet charging options
- ▶ Enhance environmental credentials
- ▶ Reduced fleet running costs

## Charger Level Electric Car Distance

CHARGER TYPE	POWER LEVEL	ELECTRIC CAR DISTANCE
LEVEL 1	240 V 1.4kW	7.5 KM - 15 KM/hour
LEVEL 2	240 V 3.3kW - 7.4kW	18 KM - 40 KM/hour
LEVEL 2 FAST	415V 11kW - 22kW	45 KM - 120 KM/hour
LEVEL 3	DC Fast Charger	70 KM/10 minutes or 420 KM/hour



# Group Capability

- ✓ Recently as a group: SMSA / PVS / SCP
- ✓ Across the 3 years

## Completed:

- ✓ 39,500SQM of Solar Car Parks
- ✓ 18,442SQM of Shade Car Parks
- ✓ 7,025SQM of Waterproof Tensile Membrane Car Parks

TOTAL OF:

# 64,900SQM

Manufactured and installed  
over 3 years

